



Signal® Mirror Installation Instructions

Honda Goldwing GL 1500, 1988-2000



THE safety accessory of the 21st Century.™

P/N 210-0049-0

Rev E (10/5/07), BTV

© 2003 Muth Mirror Systems, LLC.

Please read instructions prior to installation.

INCLUDED ITEMS:

1 left and 1 right *Signal*[®] mirror and housing
1 left and 1 right wire harness
1 instruction manual
1 piece of heat shrink
2 black connectors

REQUIRED TOOLS:

Medium Philips screwdriver
Needle nose pliers
Electric drill
1/4" drill bit
Masking tape
Multimeter
Sturdy gloves
Safety glasses or goggles

PROBLEMS OR QUESTIONS?

Technical Assistance is available by calling
Muth Mirror Systems Technicians at:

1-800-844-6616

Monday through Friday
Between 8:00 a.m. and 5:00 p.m. CST

Or through the Muth web site:

www.muthco.com

Or via E-mail: sales@muthco.com

Professional Installation Recommended:

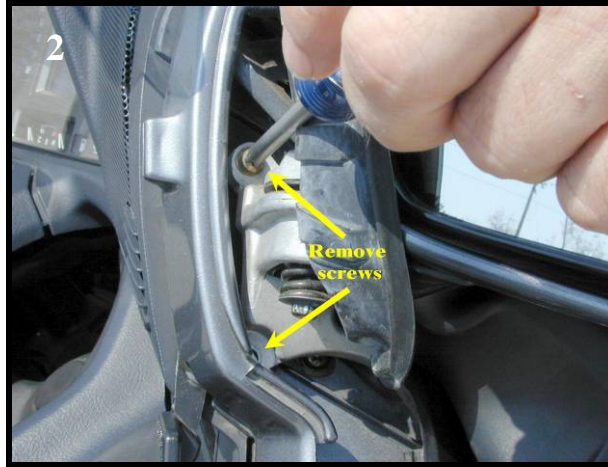
Warranty does not cover damage to the vehicle or mirror housing due to improper installation. Muth Mirror Systems, LLC (MMS) assumes no responsibility with regard to the accuracy of this information.

MMS assumes no liability or responsibility resulting from improper installation, even in reliance upon this information. Proper installation is the responsibility of the installer. It is your responsibility to verify any circuit before interfacing with it using a digital multimeter.

Mirror Housing Removal



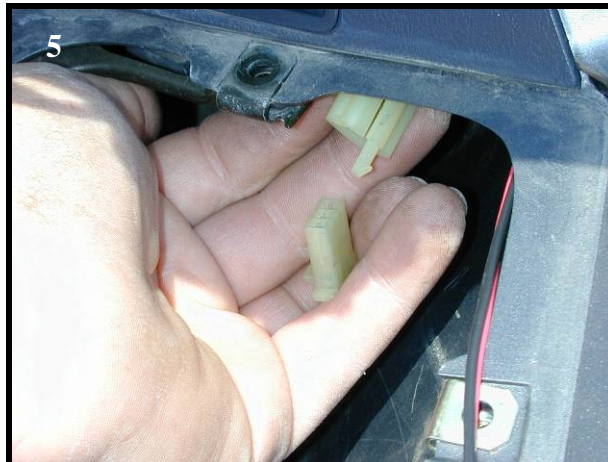
Start on either the left or right side mirror. These instructions start with the right side mirror. Pull back the rubber boot covering the mirror mount.



There are three screws holding the mirror housing to the mirror mount. Remove the three screws. Set the mirror housing aside.



Remove the accessory compartment cover. Remove the four screws on all sides of the accessory compartment. Remove the accessory compartment from the motorcycle fairing and set it aside.



The motorcycle's electrical wiring for turn indicators is located forward of the accessory compartment cavity and behind the front amber turn indicator light. Disconnect the wire connected to the turn indicator light.

Mirror Replacement



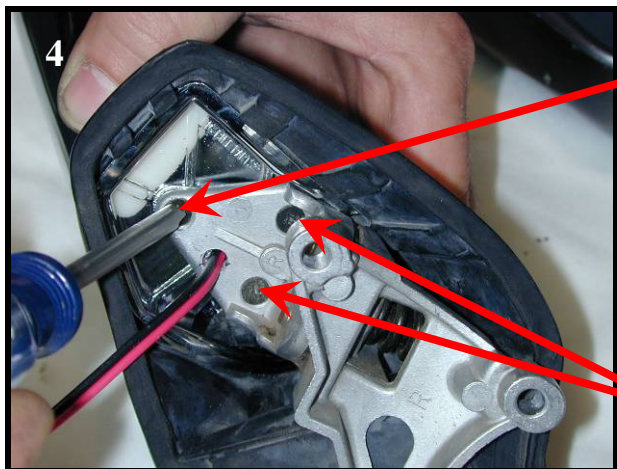
Remove the three screws holding the hinge to the mirror housing. Remove the hinge and remove the rubber boot surrounding the mirror housing.



Match the base of the hinge up to the new *Signal*® mirror housing. Mark the place on the hinge where the *Signal*® mirror wire will go through. Drill a 1/4" hole in the hinge.



Position the rubber boot over the *Signal*® mirror housing.



Shorter screw

Longer screws

Guide the *Signal*® mirror wire harness through the drilled hole in the hinge. Mount the hinge on the *Signal*® mirror housing using the original three screws.

NOTE: Make sure the hinge is securely fastened AND properly aligned to the housing or mirror vibration will occur! Do not over tighten or holes may strip!

Wiring and Wire Identification



1
Install plug and play harness.



2
Male pins are already installed on harness from *Signal*® mirror.



3
Route wire from *Signal*® mirror harness



4
Route wire from *Signal*® mirror harness continued...



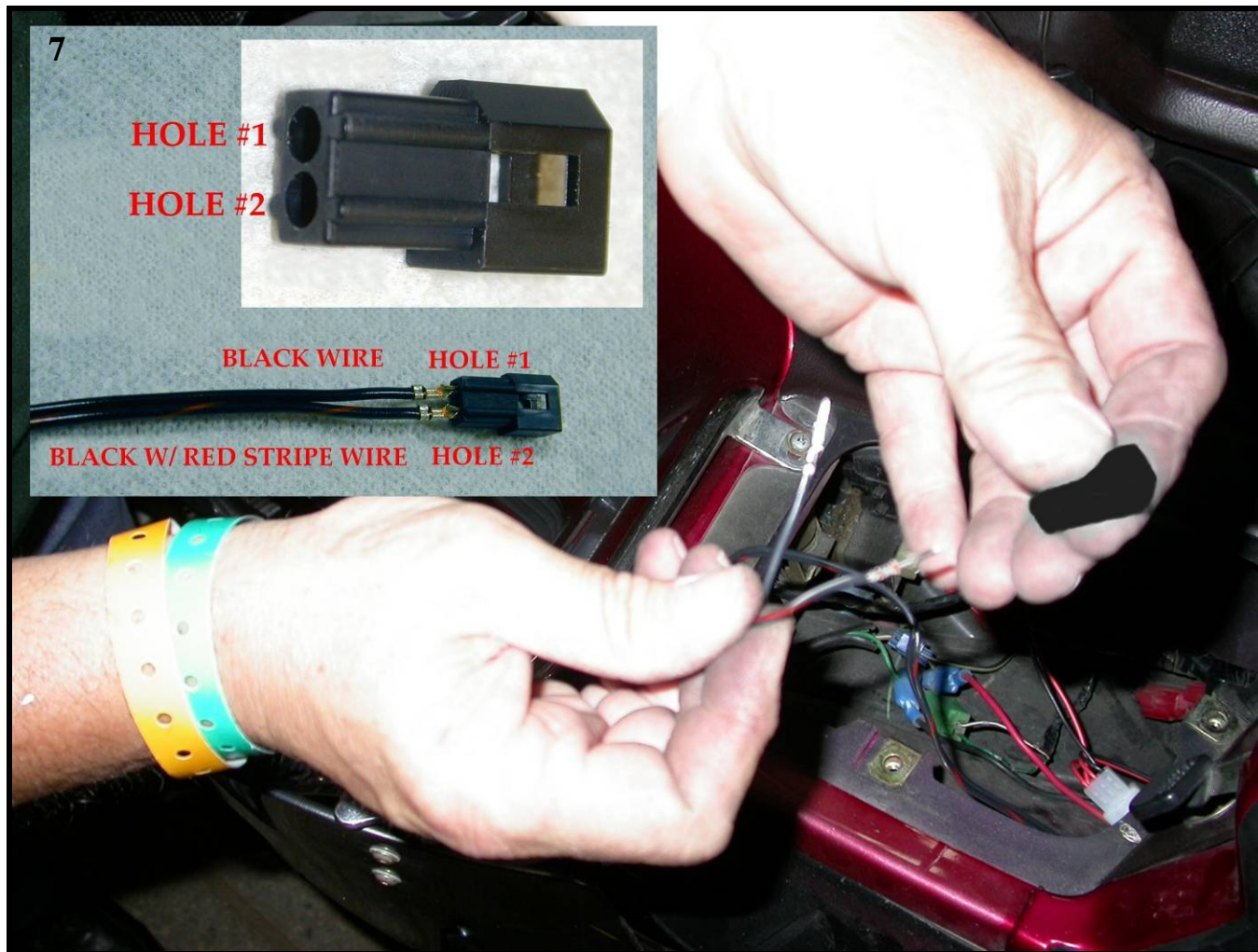
5
Reinstall *Signal*® mirror onto motorcycle



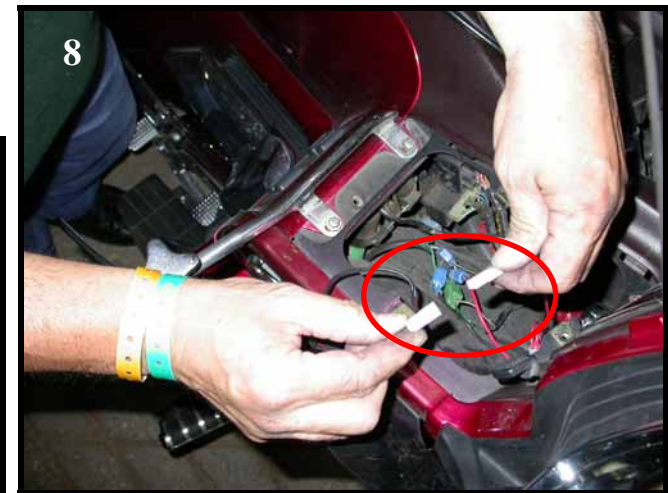
6
Reinstall *Signal*® mirror onto motorcycle continued...

Wiring and Wire Identification Continue

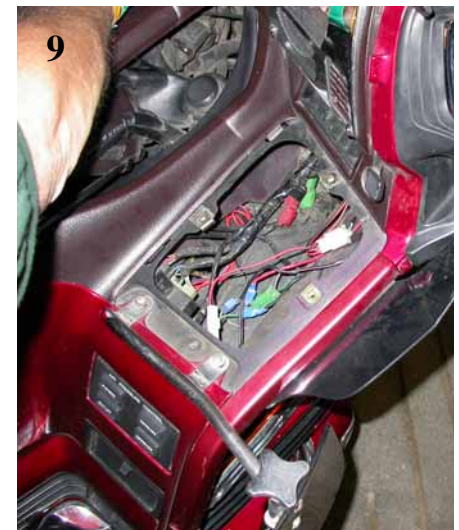
***WARNING: INCORRECT WIRING WILL CAUSE SIGNAL® MIRROR NOT TO FUNCTION ***



Insert pins into female connector. **NOTE: Insert pin from the black wire into hole #1. Put the pin from black with red stripe into hole #2.**



Plug mirror into motorcycle harness. Turn ignition on, test the *Signal*® mirror for functionality.



Tuck wiring into fairing. Replace accessory compartment cover, rubber boot, etc. Repeat steps for the other *Signal*® mirror.