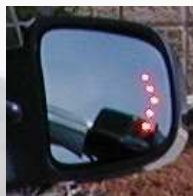




# *Signal*® Mirror Installation Instructions

BMW K1200LT Motorcycle 1999-2009



***THE safety accessory of the 21<sup>st</sup> Century.™***

P/N 210-0074-0

Rev D7 (12-10-08), BTV

© 2002 Muth Mirror Systems, LLC.



**Please read instructions prior to installation.**

**INCLUDED ITEMS:**

- 1 left hand *Signal*<sup>®</sup> mirror
- 1 right hand *Signal*<sup>®</sup> mirror
- 1 left hand wire harness
- 1 right hand wire harness
- 2 nylon cable ties
- 1 instruction manual

**REQUIRED TOOLS:**

- Philips head screwdriver
- Needle nose pliers
- Small pry bar
- Masking tape
- Multimeter
- Sturdy gloves
- Safety glasses or goggles

- INCLUDED ITEMS:**
- 1 left hand *Signal*<sup>®</sup> mirror
  - 1 right hand *Signal*<sup>®</sup> mirror
  - 1 left hand wire harness
  - 1 right hand wire harness
  - 2 nylon cable ties
  - 1 instruction manual
- REQUIRED TOOLS:**
- Philips head screwdriver
  - Needle nose pliers
  - Small pry bar
  - Masking tape
  - Multimeter
  - Sturdy gloves
  - Safety glasses or goggles

### **REQUIRED TOOLS:**

- Philips head screwdriver
- Needle nose pliers
- Small pry bar
- Masking tape
- Multimeter
- Sturdy gloves
- Safety glasses or goggles

### **REQUIRED TOOLS:**

- Philips head screwdriver
- Needle nose pliers
- Small pry bar
- Masking tape
- Multimeter
- Sturdy gloves
- Safety glasses or goggles

**PROBLEMS OR QUESTIONS?**

Technical Assistance is available by calling  
Muth Mirror Systems Technicians at:

1-800-844-6616

Monday through Friday  
Between 8:00 a.m. and 5:00 p.m. CST

Or through the Muth web site:  
[www.muthco.com](http://www.muthco.com)

Or via E-mail: [techsupport@muthco.com](mailto:techsupport@muthco.com)

**PROBLEMS OR QUESTIONS?**

Technical Assistance is available by calling  
Muth Mirror Systems Technicians at:

1-800-844-6616

Monday through Friday  
Between 8:00 a.m. and 5:00 p.m. CST

Or through the Muth web site:  
[www.muthco.com](http://www.muthco.com)

Or via E-mail: [techsupport@muthco.com](mailto:techsupport@muthco.com)

**PROBLEMS OR QUESTIONS?**

Technical Assistance is available by calling  
Muth Mirror Systems Technicians at:

1-800-844-6616

Monday through Friday  
Between 8:00 a.m. and 5:00 p.m. CST

Or through the Muth web site:  
[www.muthco.com](http://www.muthco.com)

Or via E-mail: [techsupport@muthco.com](mailto:techsupport@muthco.com)

**PROBLEMS OR QUESTIONS?**

Technical Assistance is available by calling  
Muth Mirror Systems Technicians at:

1-800-844-6616

Monday through Friday  
Between 8:00 a.m. and 5:00 p.m. CST

Or through the Muth web site:  
[www.muthco.com](http://www.muthco.com)

Or via E-mail: [techsupport@muthco.com](mailto:techsupport@muthco.com)

**PROBLEMS OR QUESTIONS?**

Technical Assistance is available by calling  
Muth Mirror Systems Technicians at:

1-800-844-6616

Monday through Friday  
Between 8:00 a.m. and 5:00 p.m. CST

Or through the Muth web site:  
[www.muthco.com](http://www.muthco.com)

Or via E-mail: [techsupport@muthco.com](mailto:techsupport@muthco.com)

**PROBLEMS OR QUESTIONS?**

Technical Assistance is available by calling  
Muth Mirror Systems Technicians at:

1-800-844-6616

Monday through Friday  
Between 8:00 a.m. and 5:00 p.m. CST

Or through the Muth web site:  
[www.muthco.com](http://www.muthco.com)

Or via E-mail: [techsupport@muthco.com](mailto:techsupport@muthco.com)

**PROBLEMS OR QUESTIONS?**

Technical Assistance is available by calling  
Muth Mirror Systems Technicians at:

1-800-844-6616

Monday through Friday  
Between 8:00 a.m. and 5:00 p.m. CST

Or through the Muth web site:  
[www.muthco.com](http://www.muthco.com)

Or via E-mail: [techsupport@muthco.com](mailto:techsupport@muthco.com)

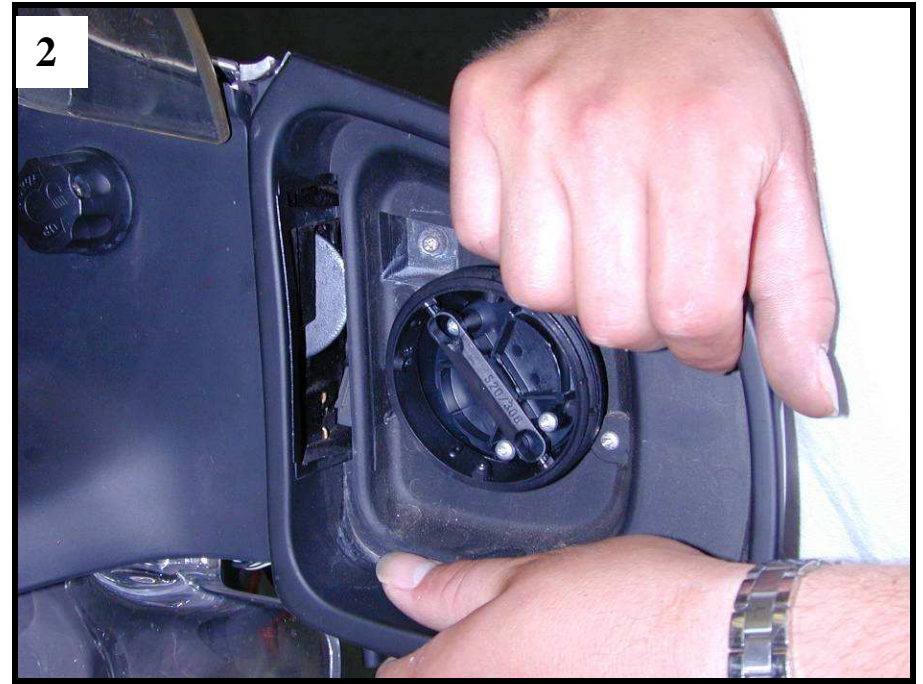
## Note: Professional Installation Recommended

Warranty does not cover damage to the vehicle or mirror housing due to improper installation. The following installation instructions are to be considered as a guide only. Indicator wire color and location may have changed since publication of these instructions. The installer is responsible for any damage that may occur during installation.

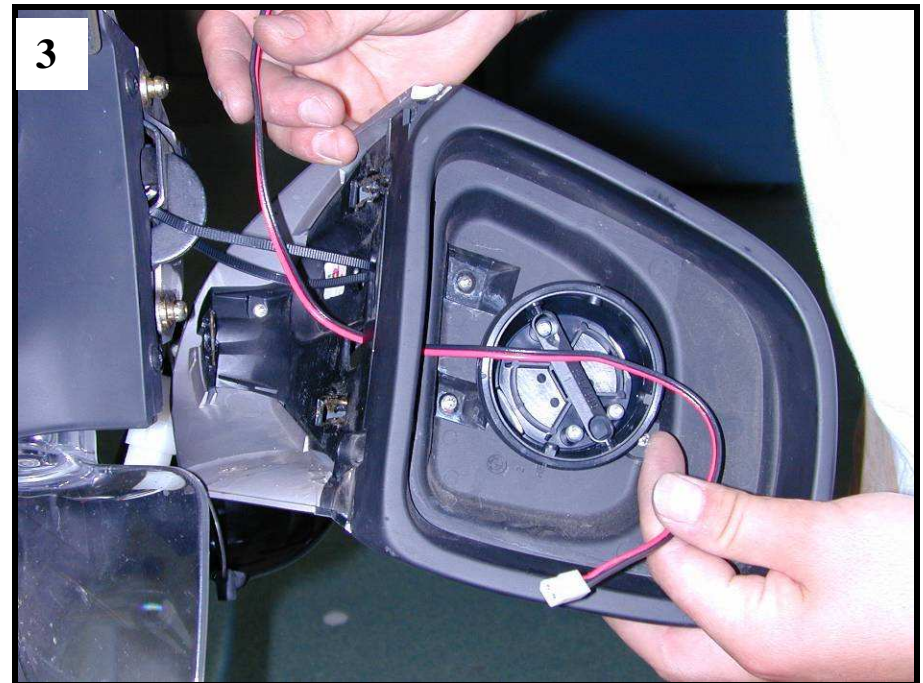
## Note: Professional Installation Recommended

Warranty does not cover damage to the vehicle or mirror housing due to improper installation. The following installation instructions are to be considered as a guide only. Indicator wire color and location may have changed since publication of these instructions. The installer is responsible for any damage that may occur during installation.

# Mirror Replacement

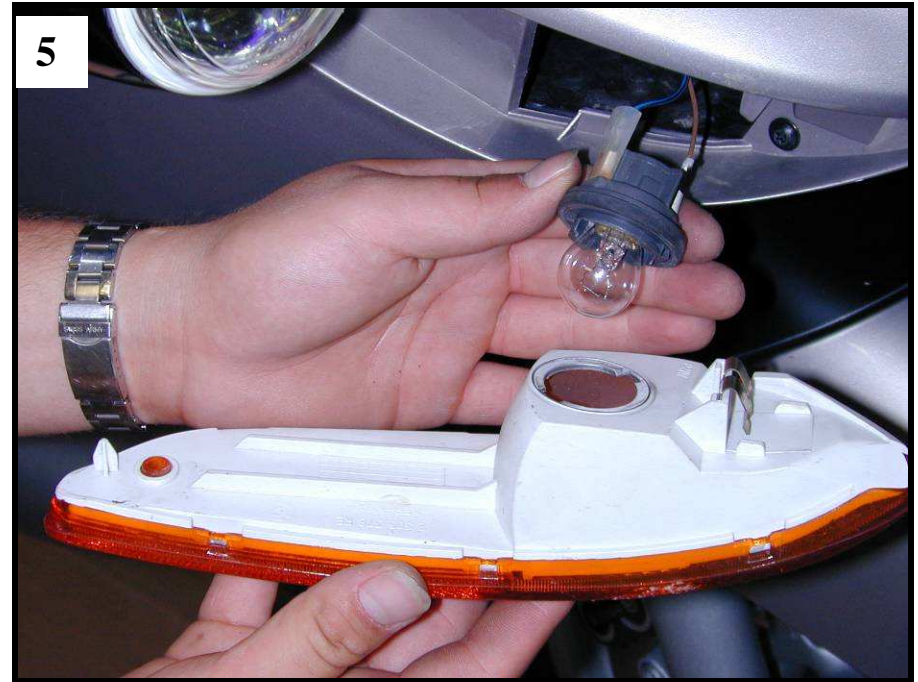


1. Start on either the left or right side mirror. These instructions start with the right side mirror. Remove the factory mirror by inserting the pry bar as shown. Slowly twist the pry bar to disengage the mirror. **NOTE: Insert the pry bar as close to the mirror mount as possible before prying out the OE mirror. Not doing so may cause the crossbar on the motor actuator to break.**
2. Grab the mirror housing as shown and slowly push down to disengage housing from motorcycle.
3. Once you have the mirror housing removed, route the *Signal*® mirror wire harness through the hole in the housing. **Note: Leave about 6"** of slack, on the wire, for adjustment later on.

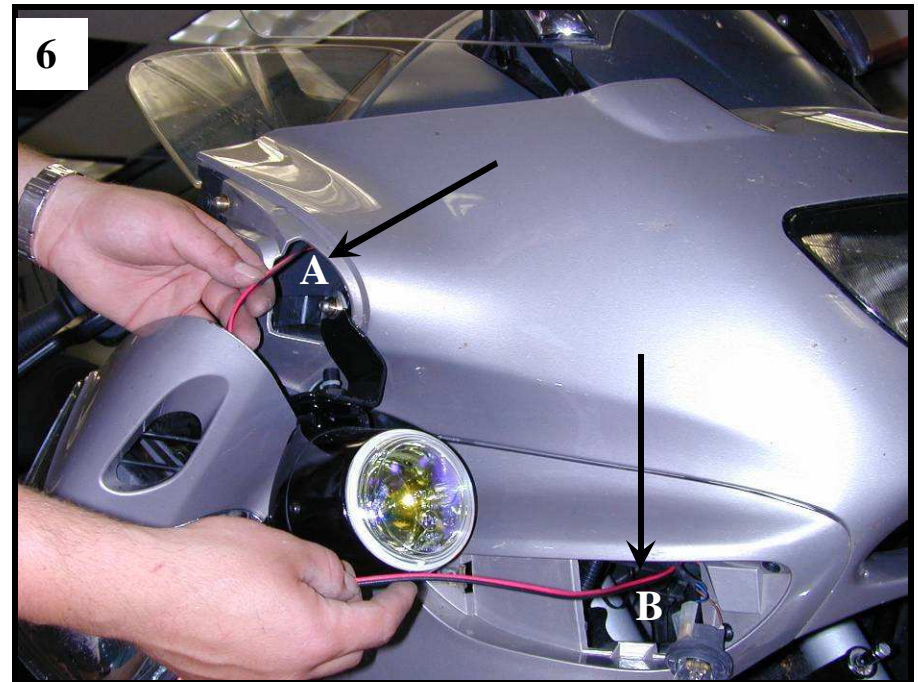




## Mirror Replacement Continued

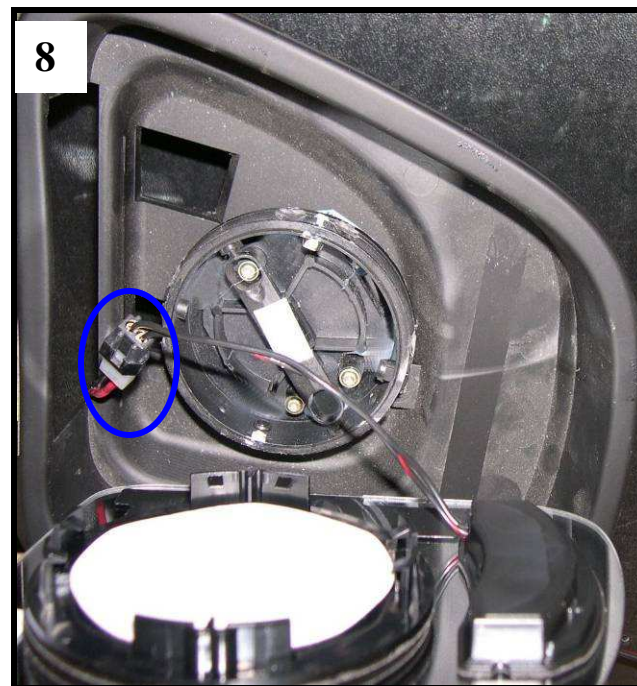
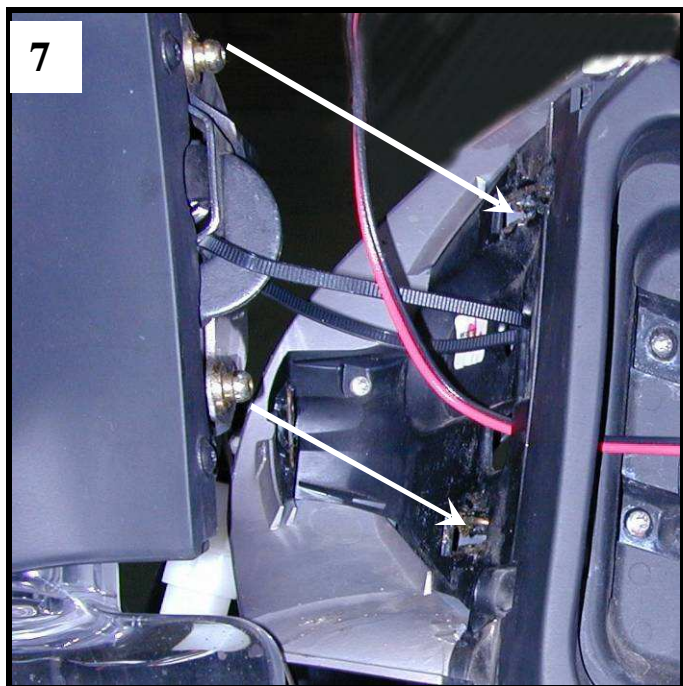


4. Use a screwdriver and remove the screw from the front turn indicator lens.
5. Disengage the lens and remove the light bulb as shown.
6. Route the *Signal*® mirror wire harness through the top opening in (A) and out the bottom opening in (B).

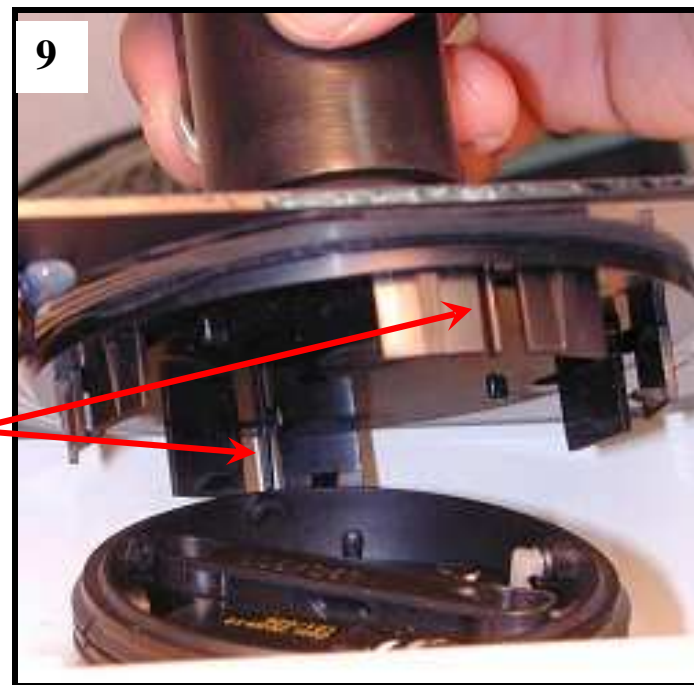




## Mirror Replacement Continued



7. Use one of the supplied cable ties to tether the mirror housing to the bike as shown above. Align the 3-pins with their corresponding snap holes and snap the mirror housing into place.
8. Connect the two mating connectors. Remove Cap Sheet from two-sided adhesive disc on back of *Signal*® mirror and align the *Signal*® mirror within the mirror housing.
9. Align the anti-rotation prongs found on the top and bottom or left and right with the corresponding slots on the motor mount. Push down firmly on the *Signal*® mirror and the mirror housing until the *Signal*® mirror motor mount is fully engaged. **Note: Push firmly on all sides of the *Signal*® mirror to ensure proper engagement and travel. Not doing so could result in mirror falling off.**
10. Repeat steps for the left hand mirror replacement.



# Wiring

1. Make sure each of the *Signal*<sup>®</sup> mirror wire harnesses is routed to each front turn directional light bulb.
2. Slightly pull on the right-hand *Signal*<sup>®</sup> mirror wire harness to remove any slack within the mirror housing. **Caution: Do not pull too hard or you might disengage the two mating connectors with the mirror housing.** Use a multimeter to test the two wires on the right turn indicator light bulb to ensure which is the HOT WIRE and which is the GROUND WIRE. Label them accordingly as “right side turn” and “right side ground.” Disconnect the right side HOT WIRE (previously labeled “right side turn”) from the right turn light bulb terminal. Connect the right side *Signal*<sup>®</sup> mirror RED wire Y-connector to the vacated light bulb terminal. Connect the right side HOT WIRE (previously labeled “right side turn”) to the Y-connector on the right side *Signal*<sup>®</sup> mirror RED wire. Repeat process for the right side GROUND WIRE.
3. Pull slightly on the *Signal*<sup>®</sup> mirror wire harness on the left side to remove any slack within the mirror housing. **Caution: Do not pull too hard or you might disengage the two mating connectors with the mirror housing.** Use a multimeter to test the two wires going to the left side turn directional light bulb to ensure which is the HOT WIRE and which is the GROUND WIRE. Label them accordingly as “left side turn” and “left side ground.” Remove the left side HOT WIRE (previously labeled “left side turn”) from the left turn light bulb terminal. Connect the Y-connector on the left side *Signal*<sup>®</sup> mirror RED wire to the vacated light bulb terminal. Connect the left side HOT WIRE (previously labeled “left side turn”) to the Y-connector on the left side *Signal*<sup>®</sup> mirror RED wire. Repeat process for the left side GROUND WIRE.
4. Activate each turn indicator to verify that the *Signal*<sup>®</sup> mirrors are working.
5. Insert each light bulb back into the indicator lens. Secure the indicator lens back into place. Replace any other accessories necessary.



**For bike maintenance purposes:** If you have to remove the mirror from the mirror housing, you will have to use a screwdriver and remove the screw from the front turn indicator lens. Disengage the lens and remove the light bulb as shown. Disconnect the *Signal*<sup>®</sup> mirror wire harness from the light bulb and the motorcycle's side turn indicator via the Y-connector. Remove the mirror from the mirror housing.