



Signal[®] Mirror Installation Instructions

2004 Dodge Durango Limited (6x9)



THE safety accessory of the 21st Century.™

P/N 210-0098-0

Rev. A (9-16-04), BTV

© 2004 Muth Mirror Systems, LLC

Note: Professional Installation Recommended

Warranty does not cover damage to the vehicle or mirror housing due to improper installation. The following installation instructions are to be considered as a guide only. Door removal procedures, indicator wire color and location may have changed since publication of these instructions. The installer is responsible for any damage that may occur during installation.

INCLUDED ITEMS:

- 1 left and 1 right *Signal*[®] mirror
- 1 left and 1 right wire harness
- 2 wire taps
- 1 ring connector
- 1 instruction manual

REQUIRED TOOLS:

- Ratchet with extension or ratcheting screwdriver
- 10mm socket
- Socket wrench
- Large slotted screwdriver
- Small pry bar
- Gopher wire
- Electrical tape
- Wire crimper and stripper
- Needle nose pliers
- Multimeter or wire tester
- Sturdy gloves
- Safety glasses or goggles
- Utility knife

Please read instructions prior to installation.

PROBLEMS OR QUESTIONS?

Technical Assistance is available by calling
Muth Mirror Systems Technicians at:

1-800-844-6616

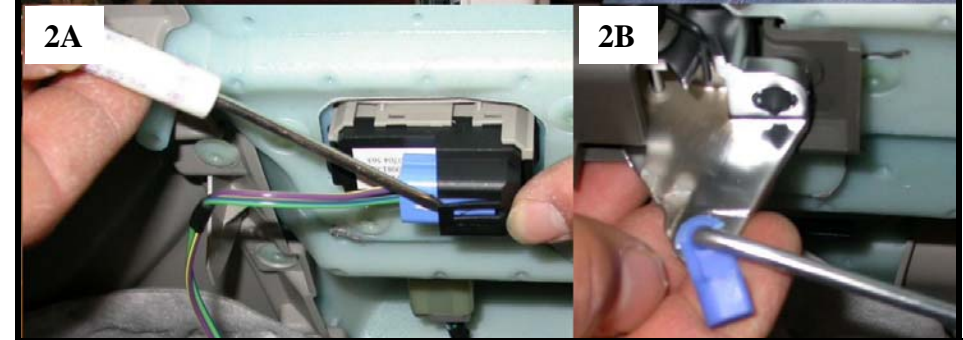
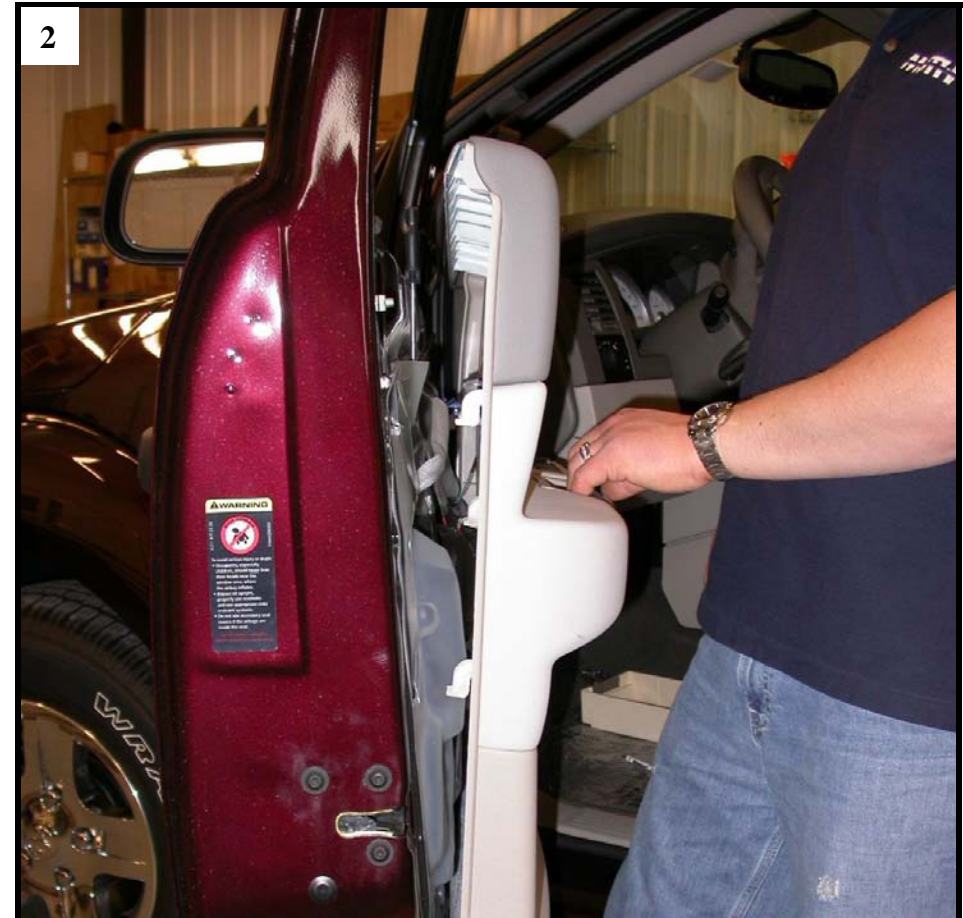
Monday through Friday
Between 8:00 a.m. and 5:00 p.m. CST

Or through the Muth web site:

www.muthco.com

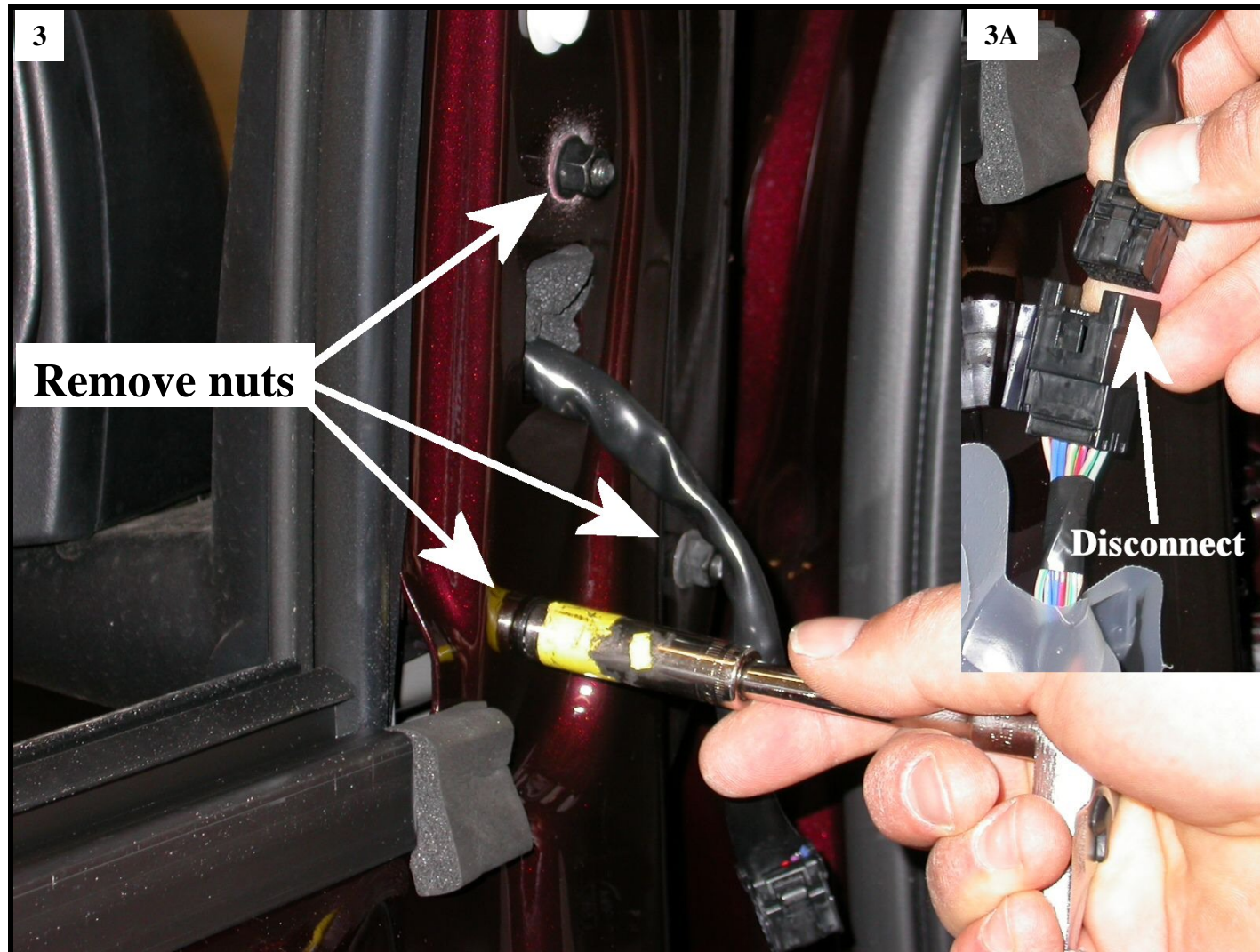
Or via E-mail: techsupport@muthco.com

Door Panel Removal



1. Start with opening the driver's side door and lowering the window. Lift-up plastic cover and remove screw in door handle (**Fig. A**). Remove the two screws located at the bottom of the door panel (**B & C**).
2. Lift the door panel off of the door and hold it a few inches away from the door. Disconnect OE wiring connection with a flat screw driver (**2A**). Unsnap the metal rod from door handle (**2B**). Remove door panel and set it aside.

Mirror Housing Removal



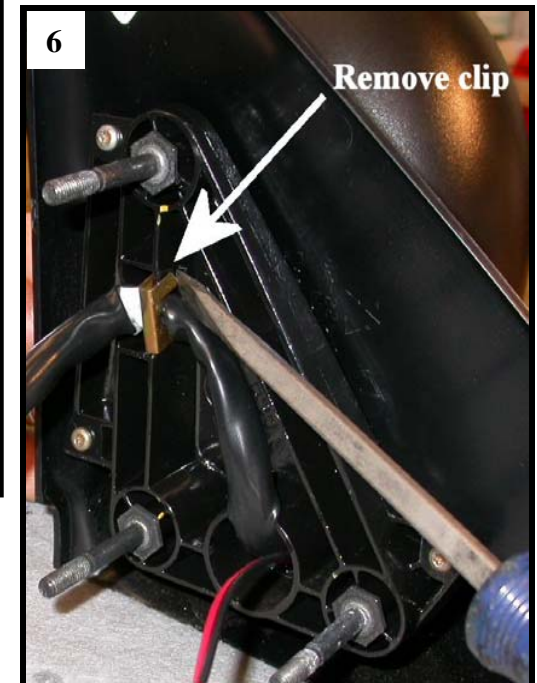
3. Disconnect OE wiring connector (3A). Secure the mirror housing with one hand and remove the three mirror mounting nuts from the corner of the door. Carefully remove the mirror housing from the door. Lay the mirror housing on a, cloth covered, flat surfaced work bench.

Mirror Replacement



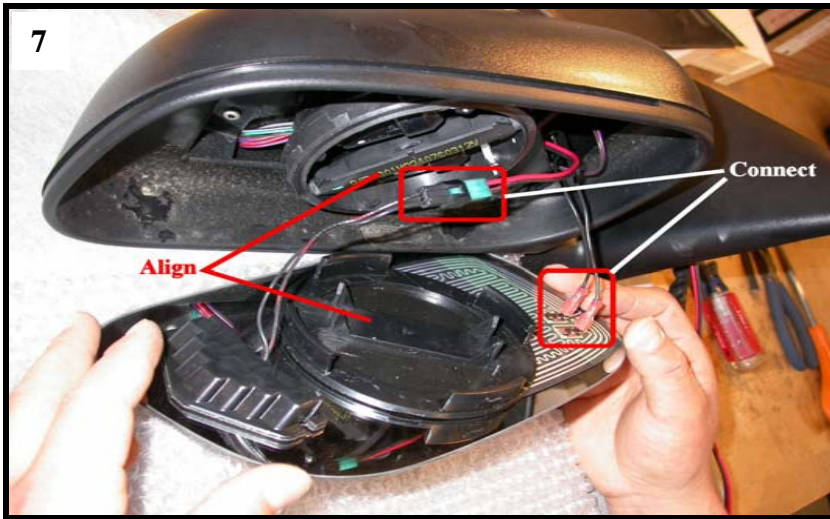
WARNING! Safety glasses and sturdy gloves are recommended for mirror glass replacement.

4. Push on the bottom edge of the mirror to manually pivot it fully outward. Insert a large flathead screwdriver down between the motor actuator and the backplate motor mount. Slowly and carefully pry around motor actuator until OE mirror pops off. **If heated**, disconnect heater wires from heater terminals and remove mirror.
5. Using the shorter of the two harnesses from the wiring kit, guide the end without the mating connector into the mirror housing and out through the mirror mount.
6. Remove wire clip with a flat head screwdriver. Route the *Signal*[®] mirror wire harness alongside OE wire harness. Re-attach wire clip to secure both wire harnesses together.



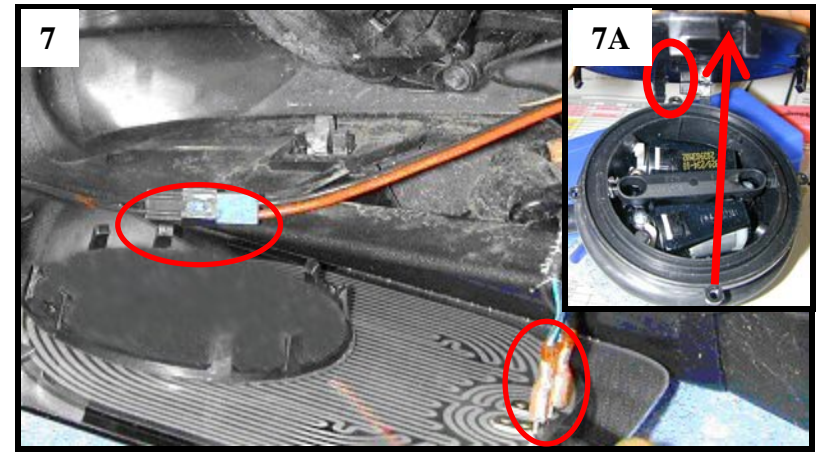
Mirror Replacement Continued

Driver Side



7. Connect the *Signal*[®] mirror mating connector to the *Signal*[®] mirror wire harness. **If heated**, reconnect the heater wires to the heater terminals on the back of the new *Signal*[®] mirror. **NOTE:** There is no polarity so the wires may be interchanged. Align the crossbar on the motor actuator with the prongs on the motor mount. Carefully tuck all wirings behind motor actuator. Center the motor mount on the motor actuator and slowly push down on the glass until the mirror snap into position.

Passenger Side



7. Connect the *Signal*[®] mirror mating connector to the *Signal*[®] mirror wire harness. **If heated**, reconnect the heater wires to the heater terminals on the back of the new *Signal*[®] mirror. **NOTE:** There is no polarity so the wires may be interchanged. Align the anti-rotation groove with the prong on the motor actuator (7A). Carefully tuck all wirings behind motor actuator. Center the snap ring on the motor actuator and slowly push down on the glass until the mirror snap into position.



8. Firmly press down on all sides of the *Signal*[®] mirror to ensure mirror is fully seated and functional.

Wire Routing

9. Guide the wire harnesses through the door and position the mirror housing assembly on the mirror mount. Bolt the mirror housing to the mirror mount with three mirror mounting nuts. **WARNING! Do not over tighten the mirror mounting nuts.**

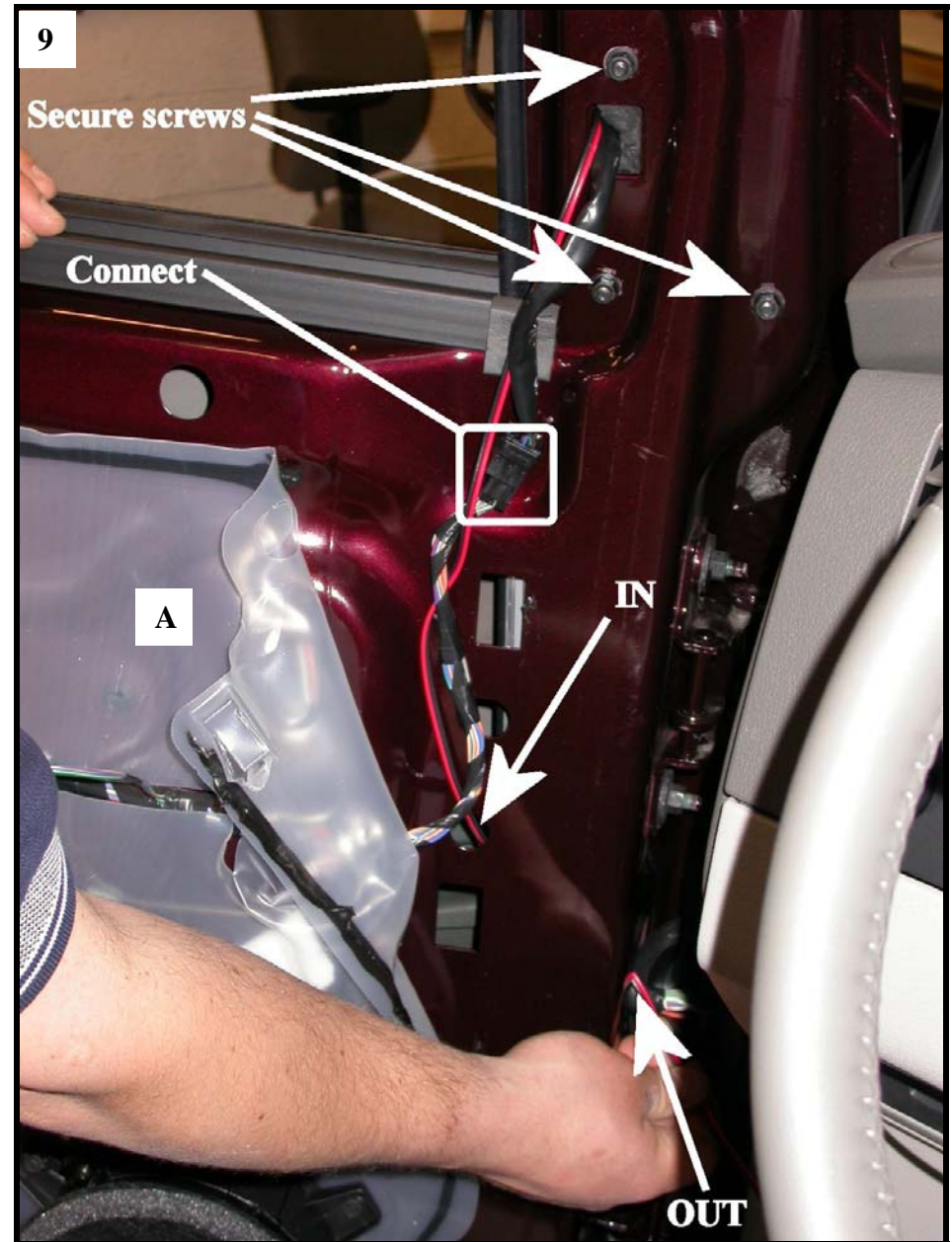
Reconnect OE wire harness.

Pull back a portion of the plastic door insulation directly below where the factory mirror harness connection is made (A).

Pull the rubber boot out between the door and door frame.

Guide the *Signal*[®] mirror wire harness alongside OE wire harness as shown in the left diagram.

Insert the *Signal*[®] mirror wire harness through the exposed hole in the door and out the opening vacated by the rubber boot. Remove any slack in the *Signal*[®] mirror wire harness.



Wire Routing Continued

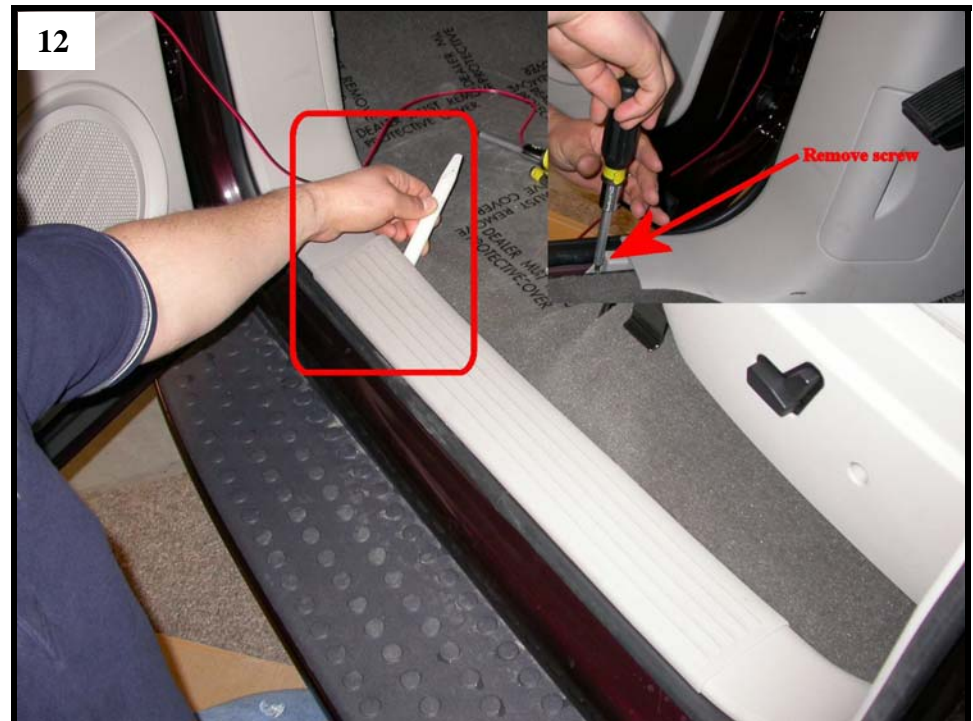
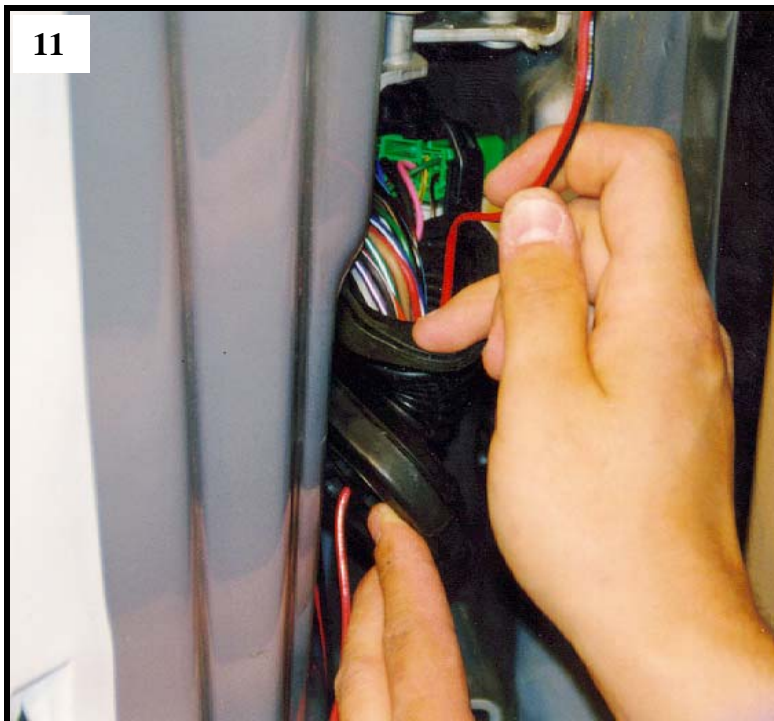


10. Separate the rubber boot from the connector.

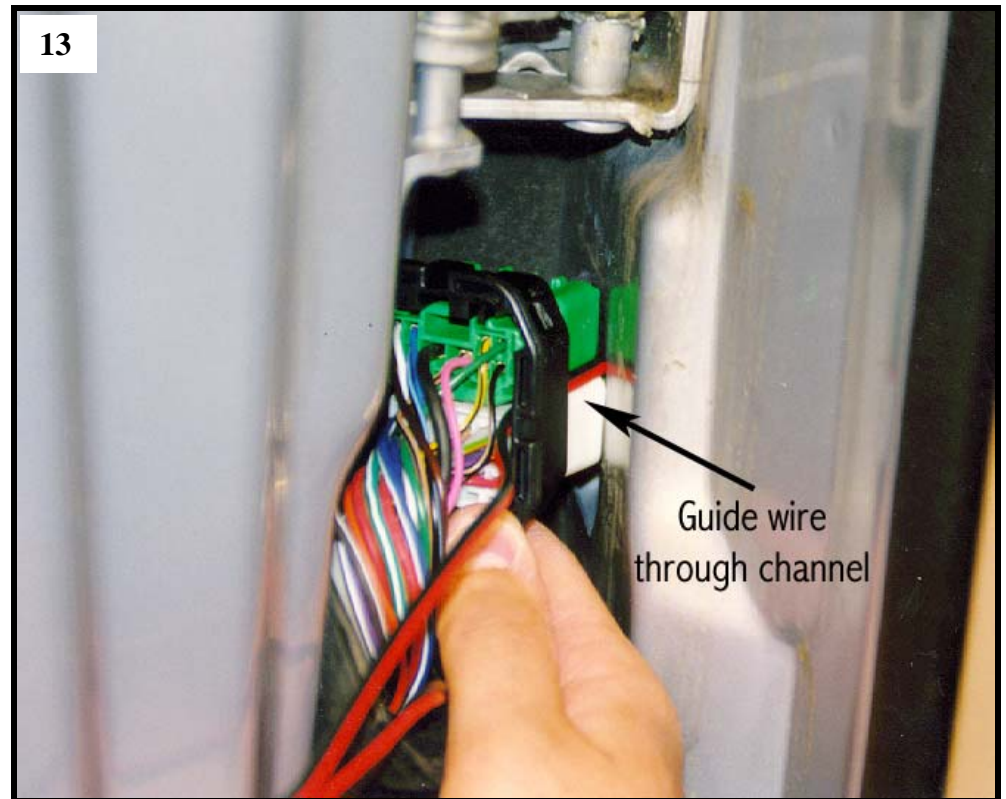
11. Pass the wire harness through the rubber boot and remove any slack in the wire harness.

12. To better access the wire harness coming through the door frame, the plastic corner molding needs to be removed. With the use of a plastic insert, lift up on the plastic trim. Grab and pull off the plastic trim along the floor board.

Remove the screw at the bottom of the corner molding along the floor board and remove the corner molding.



Wire Routing Continued



- 12A. **Passenger Side Only:** Remove the (4) screws holding the Engine Control Unit. Remove the ECU to gain access to route the *Signal*[®] mirror wire harness into the vehicle.
13. There is a small channel between the wire guides and plastic connector. Guide the wire harness through this channel and then pass the wire into the car through the door frame. Remove any slack in the wire harness and stretch the rubber boot back over the plastic connector. Snap the plastic connector back into the door frame.

Wire Identification

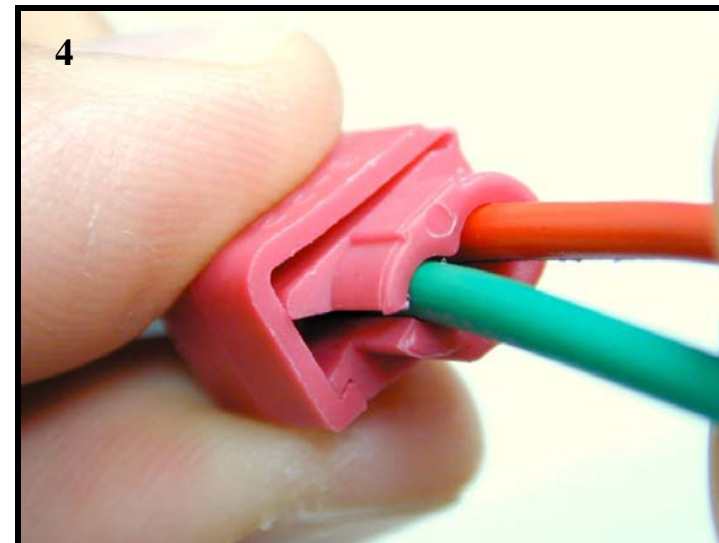
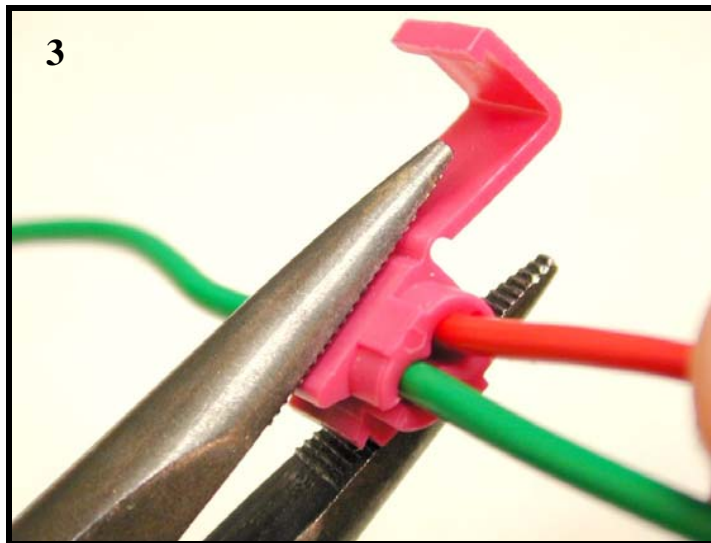
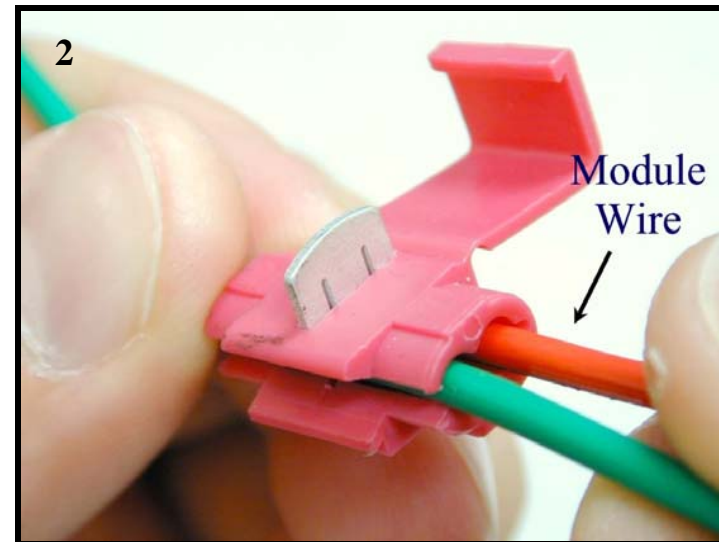
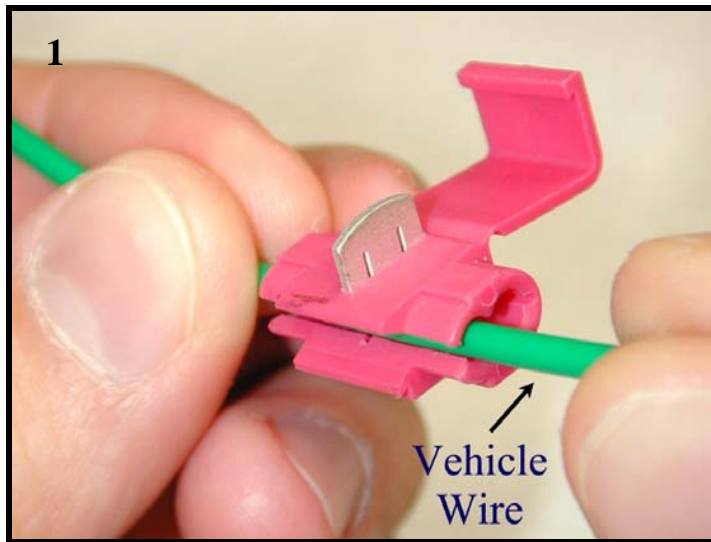
15



14. Repeat all of the previous steps to replace the factory mirror on the passenger side door with the new *Signal*[®] mirror. The wire harness for the passenger side mirror needs to run under the dashboard to the driver side area.
15. The vehicle's electrical wiring is located within the wire bundle along the floor board. Using a utility knife, carefully cut and remove some of the electrical tape to gain access to the wires behind it. Locate the solid WHITE W/ DARK GREEN STRIPE wire within the wire bundle. Turn the ignition key so that electrical power is on and activate the driver side turn indicator. Probe the wire with the wire tester to verify that flashing turn directional power is present. Label that wire as 'driver side indicator'. Locate the PURPLE W/ GRAY STRIPE wire. Activate the passenger side turn indicator and probe the wire with the wire tester to verify that flashing turn directional power is present. Label that wire as 'passenger side indicator'.

16





USE THE INCLUDED WIRE TAPS AND FOLLOW THE FOUR STEPS ABOVE TO SPLICE INTO THE TURN INDICATOR WIRES

37. Make sure the harnesses are routed securely under the dash and enough slack is left for splicing.
38. Splice the RED wire from the driver side harness into the solid WHITE W/ DARK GREEN STRIPE wire previously labeled 'driver side indicator'.
39. Splice the RED wire from the passenger side harness into the PURPLE W/ GRAY STRIPE wire previously labeled 'passenger side indicator'.
40. Strip and twist together the ends of the black wires from each harness. Crimp them together in the supplied ring connector and ground to a suitable nearby location on the metal framework of the vehicle (**SEE FIG. 16 – Above**).
41. Activate each turn indicator to verify that the *Signal*[®] mirrors are working properly.
42. Replace the plastic door frame moldings and trim, door panels, Engine Control Unit, and all accessories.