



## *Signal*® Mirror Installation Instructions

2004 - 2010 Chevy Colorado, 2004-2010 GMC Canyon



***THE safety accessory of the 21<sup>st</sup> Century.™***

P/N 210-0102-0

Rev. A5 (10/7/09), BTV

© 2007 Muth Mirror Systems, LLC



● **Note: Professional Installation Recommended**

**Warranty does not cover damage to the vehicle or mirror housing due to improper installation.**

**The following installation instructions are to be considered as a guide only. Door removal procedures, indicator wire color and location may have changed since publication of these instructions. The installer is responsible for any damage that may occur during installation.**

**INCLUDED ITEMS:**

- 1 left and 1 right *Signal*<sup>®</sup> mirror
- 1 left and 1 right wire harness
- 2 wire taps
- 2 ring connector
- 1 instruction manual

**REQUIRED TOOLS:**

- Ratchet with extension or ratcheting screwdriver
- 10mm socket
- Socket wrench
- Large flat head screwdriver
- Small pry bar
- Gopher rod
- Electrical tape
- Wire crimper and stripper
- Needle nose pliers
- Multimeter or wire tester
- Sturdy gloves
- Safety glasses or goggles
- Utility knife

**Please read instructions prior to installation.**

**PROBLEMS OR QUESTIONS?**

Technical Assistance is available by calling  
Muth Mirror Systems Technicians at:

1-800-844-6616

Monday through Friday  
Between 8:00 a.m. and 5:00 p.m. CST

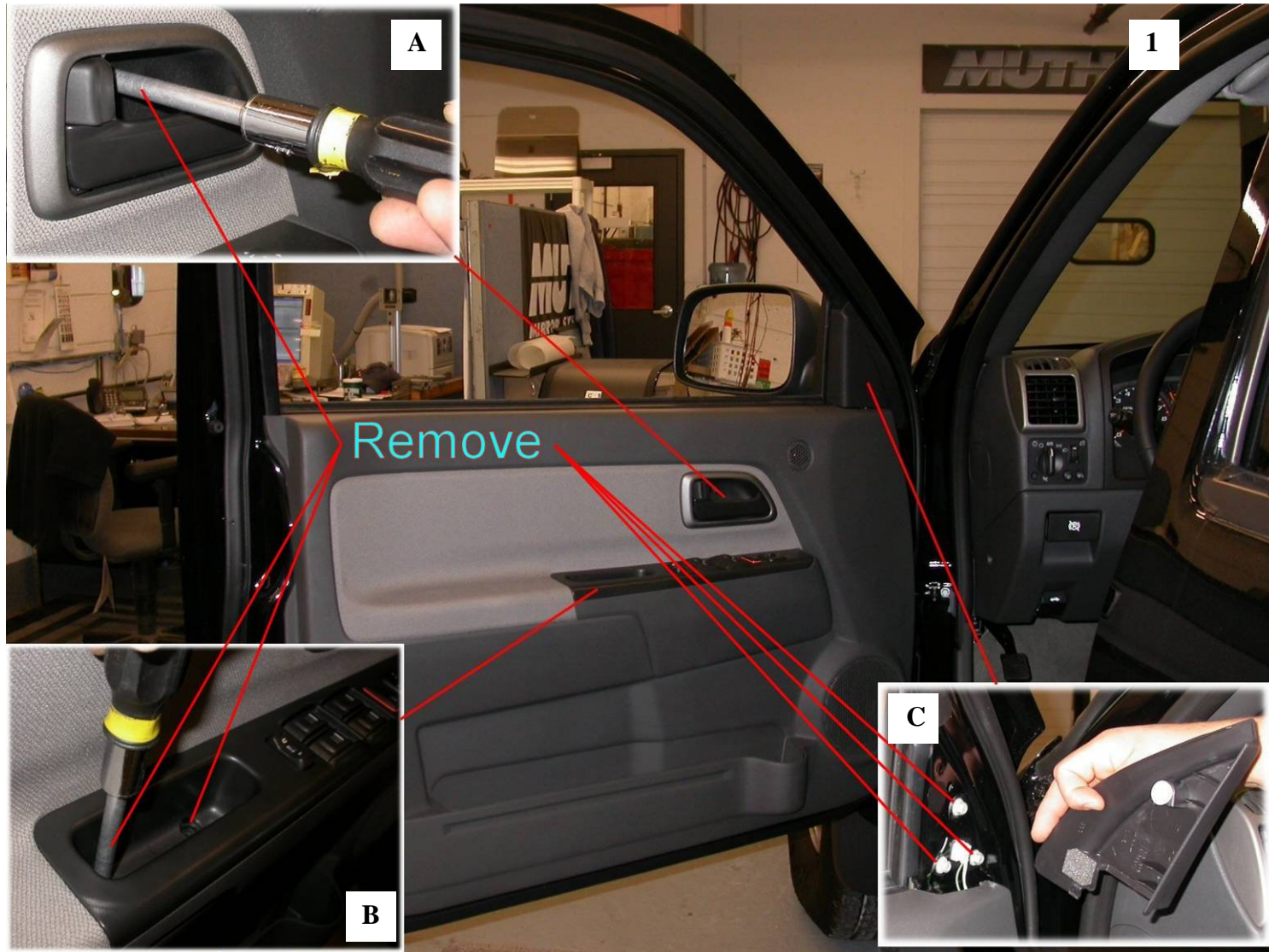
Or through the Muth web site:

[www.muthco.com](http://www.muthco.com)

Or via E-mail: [techsupport@muthco.com](mailto:techsupport@muthco.com)



# Door Panel & Mirror Housing Removal



1. Start with opening the driver's side door and lowering the window. Remove screw in door handle (A) and remove door handle cover. Remove the (2) screws located at the control console (B). Lift up, disconnect all wiring connectors and remove control console. Unsnap corner plastic triangular cover (C). Secure the mirror housing with one hand, remove the (3) bolts holding the mirror housing to the door frame using a 10mm socket. Carefully remove mirror housing from door frame and set mirror housing on a cloth covered surface. Pull on door panel to unsnap it from door. Lift up and hold door panel a few inches away. Disconnect tweeter and remove door panel.

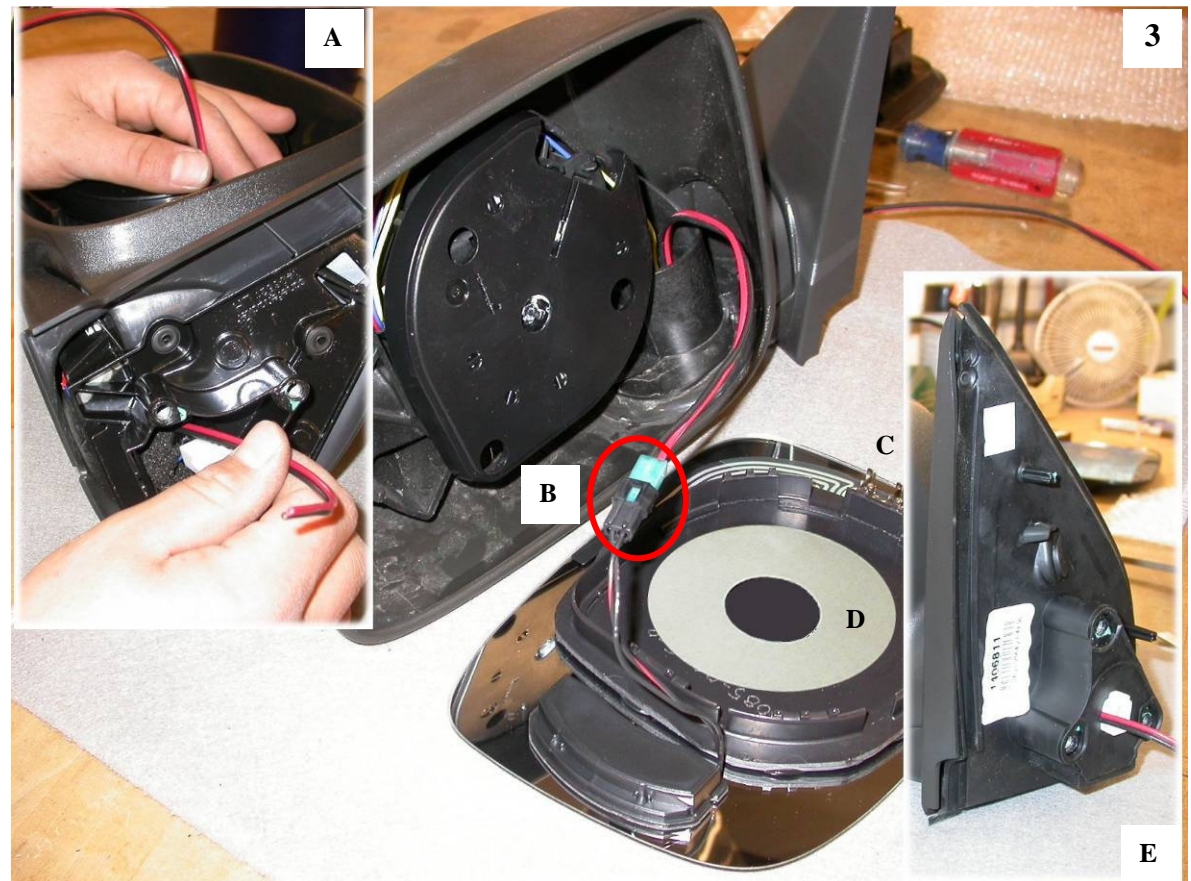
# Mirror Replacement



**WARNING! Safety glasses and sturdy gloves are recommended for mirror glass replacement.**

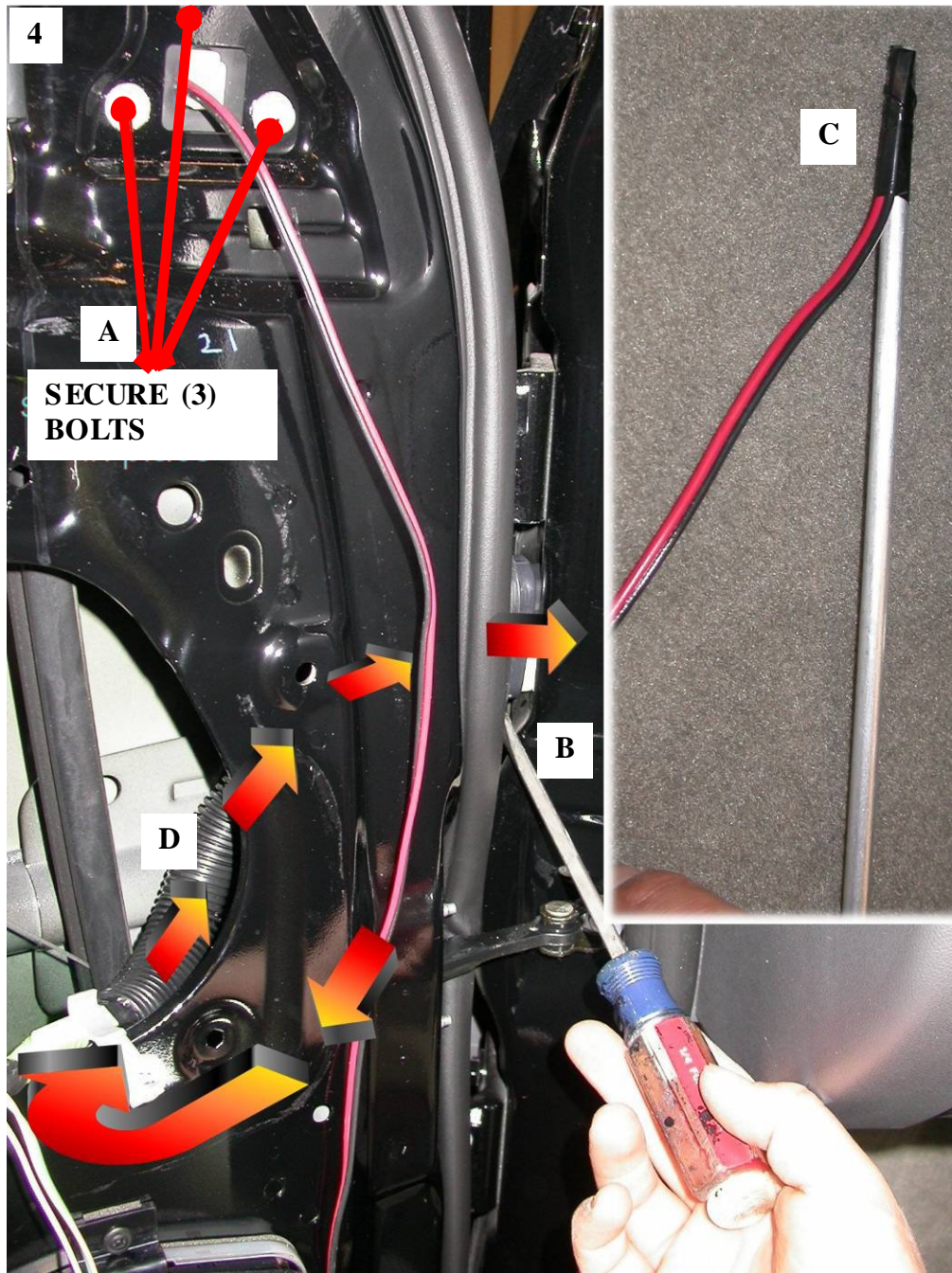
2. Push down on the upper inboard edge of glass until mirror pivots fully outward. Insert a large flathead screwdriver in between the slotted hole. Carefully pry and twist screwdriver until original mirror pops off. **If heated**, disconnect heater wires from heater terminals and remove mirror.

3. Remove the rubber insulation on the housing sail. Using the longer of the two harnesses from the wiring kit, guide the end without the mating connector into the mirror housing and out through the mirror mount. Route the *Signal*<sup>®</sup> mirror wire harness alongside original wire harness (A). Pull the *Signal*<sup>®</sup> mirror wire harness thru housing sail leaving about 4" to 6" of the wire harness inside housing. Connect the mating connectors on the new *Signal*<sup>®</sup> mirror and the *Signal*<sup>®</sup> mirror wire harness (B). **If heated**, reconnect the heater wires to the heater terminals on the back of the new *Signal*<sup>®</sup> mirror (C). **NOTE: There is no polarity so the wires may be interchanged.** Carefully tuck all wiring behind motor actuator. **Not doing so, could result in wiring interfering with mirror travel.** Remove the PSA liner on the PSA disc (D). Align and center the motor mount onto the motor actuator. With the palm of your hand, slowly push down on the glass until the new *Signal*<sup>®</sup> mirror snaps into position. Press down on all sides to ensure the new *Signal*<sup>®</sup> mirror is fully seated and functional. Re-attach the rubber insulation onto the housing sail (E).





# Wire Routing



4. Guide the wire harness through the door and position the mirror housing assembly on the mirror mount. Attach the mirror housing to the mirror mount with three mirror mounting bolts (A). **WARNING! Do not over tighten the mirror mounting bolts.**

Pull back a portion of the plastic door frame insulation to gain access to rubber boot inside door frame.

Using a flat screwdriver, push-down from the top and push-up from the bottom to release rubber boot connector from the vehicle frame (B). Pry out the rubber boot connector.

Tape the open end of the *Signal*<sup>®</sup> mirror wire harness to the gopher rod (C).

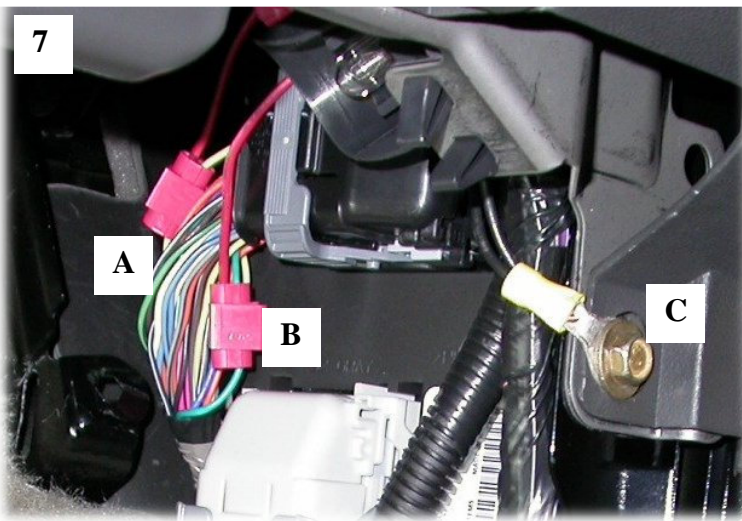
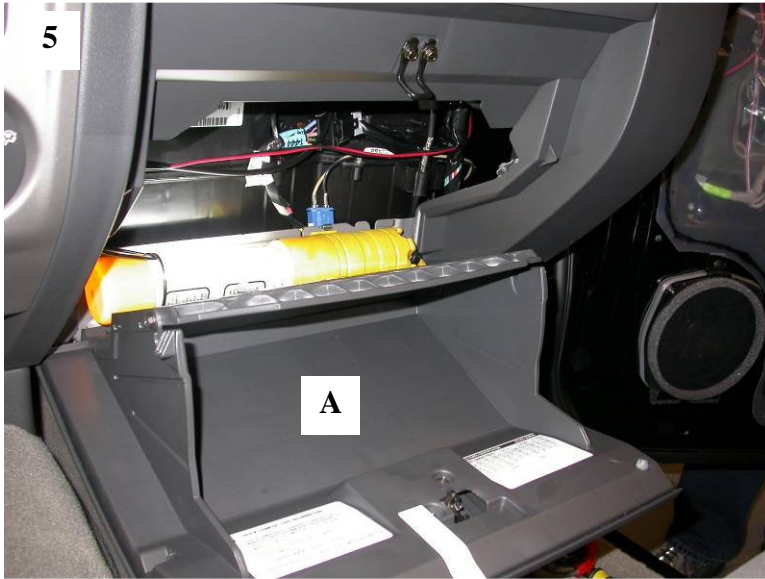
Push the gopher rod from inside door frame through the rubber boot (D). Once the gopher rod with the *Signal*<sup>®</sup> mirror wire harness protrudes through the rubber boot, cut the tape with a utility knife and pull the *Signal*<sup>®</sup> mirror wire harness through rubber boot, removing any slack in the *Signal*<sup>®</sup> mirror wire harness.

To get the wire inside the vehicle, insert the *Signal*<sup>®</sup> mirror wire harness into the hole vacated by the rubber boot connector. Remove any slack in the *Signal*<sup>®</sup> mirror wire harness. Snap the rubber boot connector back onto the vehicle frame.

The *Signal*<sup>®</sup> mirror wire harness for the driver side mirror needs to run under the dashboard to the passenger side kick panel.

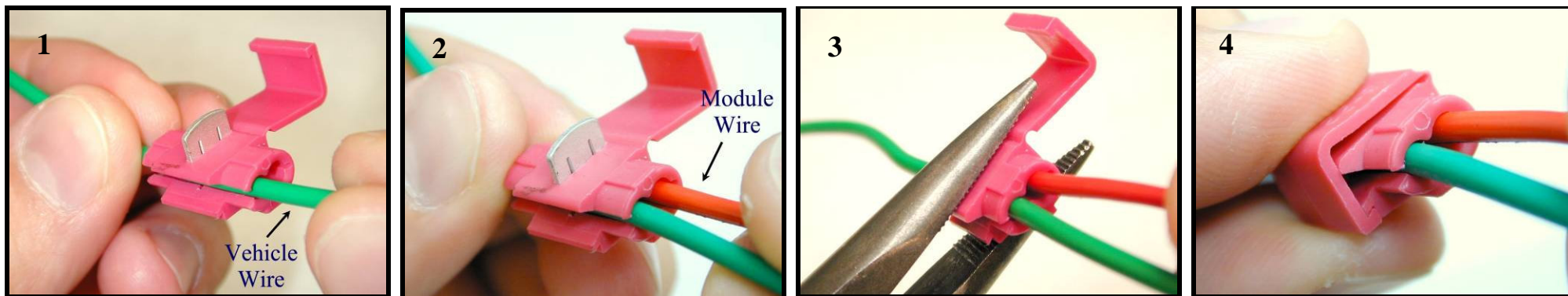
**WARNING:** When routing wire into vehicle, it is extremely important to not let wire get pinched or crushed at any time. Avoid window track and sharp edges at all times. Not doing so may cause circuit shortage problems down the road.

# Wire Identification



5. Repeat all of the previous steps to replace the factory mirror on the passenger side door with the new *Signal*<sup>®</sup> mirror. To gain access to the hole vacated by the rubber boot connector on the passenger side, you may need to fully open the glove box as shown (A).
6. The vehicle's electrical wiring is located within the wire bundle on the passenger side kick panel. Locate the solid YELLOW wire within the wire bundle. Turn the ignition key so that electrical power is on and activate the driver side turn indicator. Probe the wire with the wire tester to verify that flashing turn directional power is present. Label that wire as 'driver side indicator'. Locate the GREEN wire and activate the passenger side turn indicator. Probe the wire with the wire tester to verify that flashing turn directional power is present. Label that wire as 'passenger side indicator'.





**USE THE INCLUDED WIRE TAPS AND FOLLOW THE FOUR STEPS ABOVE TO SPLICE INTO THE TURN INDICATOR WIRES**

37. Make sure the harnesses are routed securely under the dash and enough slack is left for splicing.
38. Splice the BLACK w/ RED TRACE wire from the driver side harness into the solid YELLOW wire previously labeled 'driver side indicator' (7A).
39. Splice the BLACK w/ RED TRACE wire from the passenger side harness into the GREEN wire previously labeled 'passenger side indicator' (7B).
40. Strip and twist together the ends of the black wires from each harness. Crimp them together in the supplied ring connector and ground to a suitable nearby location on the metal framework of the vehicle (7C).
41. Activate each turn indicator to verify that the *Signal*® mirrors are working properly.
42. Reconnect all original wiring. Turn the ignition power to on, check to verify all features are working properly.
43. Replace the plastic door frame moldings, trim, door panels, and all accessories.

**Muth products are protected by these, and other pending, United States Patents**

3,075,779	5,005,009	5,014,167	5,128,659	5,207,492	5,355,284	5,361,190	5,481,409	5,528,422	5,619,374	5,619,375
5,788,357	6,005,724	6,045,243	6,076,948	6,257,746	6,700,123	6,749,325	6,918,685	7,008,091	7,015,642	7,104,676
D394,833	D409,540	D425,466	D426,506	D426,507	D427,128	D428,372	D428,373	D428,842	D429,202	D430,088