

**Tools/ items required:**

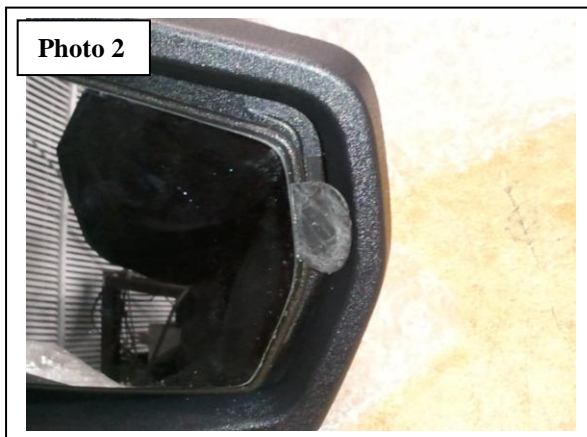
1. Heat gun
2. Small paint scraper
3. Guitar pick (medium thickness)
4. Drill with ¼" drill bit
5. Silicone RTV
6. Phillips screwdriver
7. Sturdy gloves

Step 1. Carefully remove back cover of mirror housing by releasing the engagement tabs

Step 2. Using the heat gun, heat the mirror glass surface by waving heat gun over the mirror while taking care not to overheat the mirror housing or glass back plate assembly. Apply heat for roughly 1-2 minutes to bring the mirror adhesive material to a pliable state. **See Photo 1**



Step 3. Insert guitar pick in between the mirror glass and inside lip of glass back plate and carefully separate the outboard edge of the glass from the backing plate. **See Photo 2**

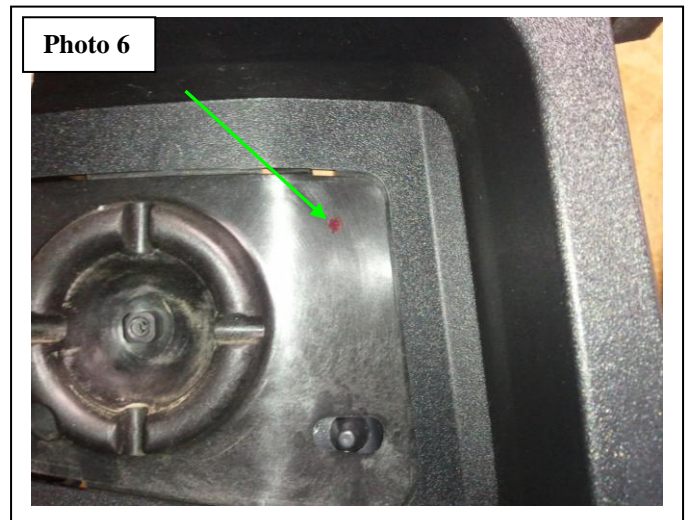


**Tip:** after guitar pick is inserted, reheat the glass with heat gun to ensure that the mirror adhesive is still pliable.

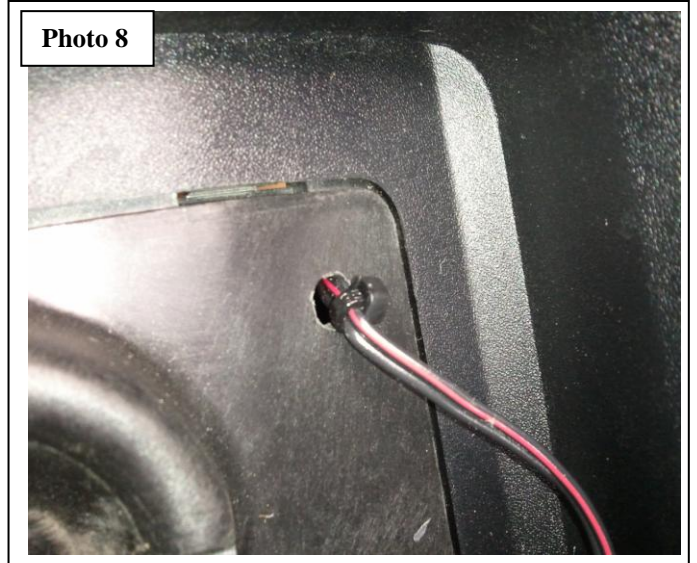
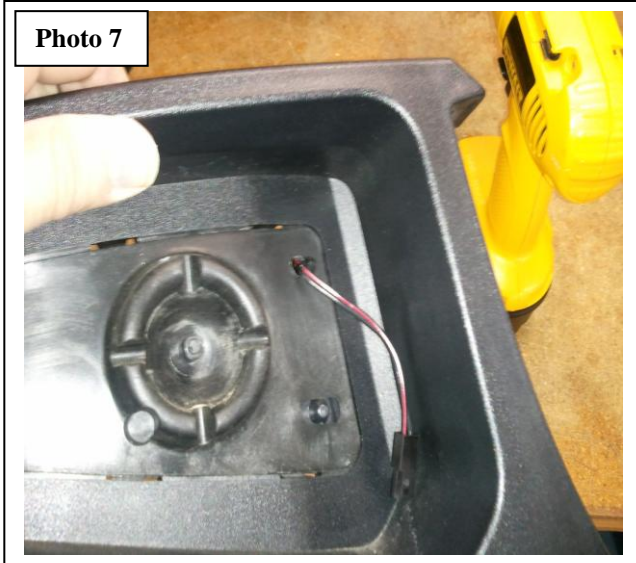
Step 4. Carefully insert the paint scraper blade underneath the glass edge **Photo 3** and slowly lift the glass upward **Photo 4**.



Step 5. Remove the backing plate retention components **Photo 5** and mark inside of housing to drill hole for routing of harness wire **Photo 6**



- Step 6. Route the harness through the hole so that roughly 4” of the connector end of harness is visible  
**Photo 7.** Strain relief the harness using a zip tie so that the harness cannot be drawn back through the hole. **Photo 8**



- Step 7. Cut hole through backing plate so that the light module fits through the hole unobstructed. Ensure that back plate surface is cleaned and free of any adhesives from the original mirror. Set the mirror into the back plate and ensure that there is not any interference present. The glass must sit flush to the back plate **Photo 9.**



- Step 8. Re-attach the retention components to secure back plate to housing and place pressure sensitive adhesive disc onto back plate as shown. It is recommended to use a silicone RTV in conjunction with the PSA disc. Route both the wire harness connector and the Signal® Mirror harness connector to the bottom and outside of the back so that the connectors can be plugged together **Photo 10** and carefully place mirror into back plate **Photo 11**.



- Step 9. Once the harness connections are plugged in, tuck the harnesses behind the glass and pull out any slack in the housing harness so that the zip tie is against the hole. Enjoy your Signal® Mirrors!!

